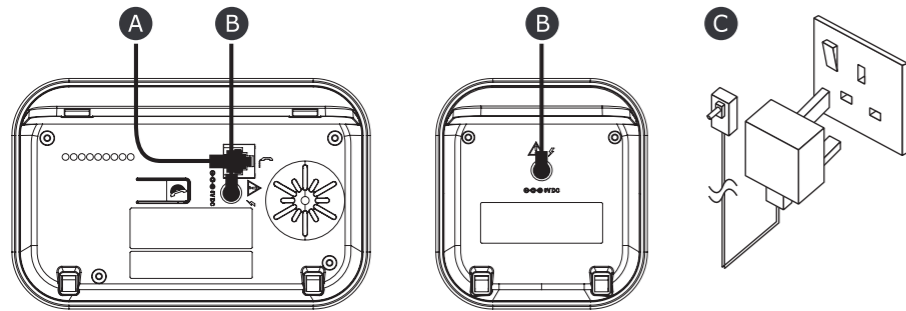


## FIRST INSTALLATION

### 1 Connecting the Base

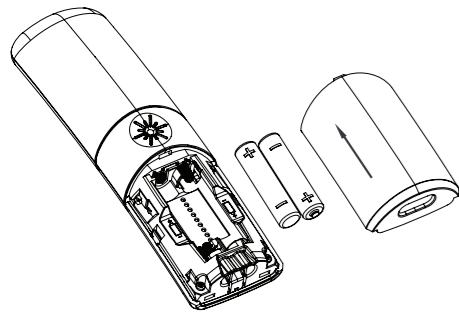
- Plug one end of the telephone line cord into the telephone jack on base bottom. (Fig. A)
- Plug the small end of power adapter into a power jack on base bottom. (Fig. B)
- Plug the large end of power adapter into a wall power outlet. (Fig. C)
- Plug the other end of the telephone line cord in to the telephone jack or micro-filter.
- Always use the cables provided in the box.
- For multiple pack version, plug the power adaptor of the charger into a wall power outlet.



### 2 Installing the handsets and Charging the Batteries

- Slide down to open the battery compartment cover.
- Place the 2 supplied rechargeable batteries as indicated. Pay extra attention to direction of polarity.
- Slide the battery compartment cover back.
- Put the handset on the base or on the charger and charge for **15 hours** before using the handset for the first time. The handset will emit a beep when it is properly placed on the base or charger.

**Always use the rechargeable batteries provided in the box.**

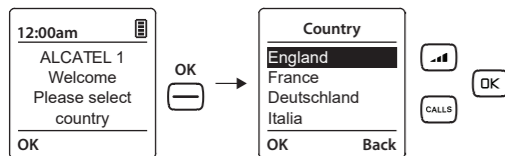


#### Notes:

If you need to remove the batteries, slide open the battery compartment cover and using the finger hole, grip the batteries and gently pull them out.

### 3 Using your phone

- After first time power up (base unit is connected to AC mains), welcome mode message will appear on the screen.
- Select your country as follows:



- You can select a language different from the country in **Settings** menu:

**Menu** / **OK** or **CALLS** / **Settings** / **OK** / **OK** or **CALLS** / **Language** / **OK** / **OK** or **CALLS** /

Select your language among the below proposals and validate with / **OK**

English	Français	Deutsch	Italiano	Nederlands	Español	Português
LANGUAGE	LANGUE	SPRACHE	LINGUA	TAAL	IDIOMA	LÍNGUA

In case you selected a wrong language please find below the translation of **Settings** to reselect the language:

English	Français	Deutsch	Italiano	Nederlands	Español	Português
Settings	Réglages	Einstellungen	Impostazioni	Instellingen	Config. Telef.	Definições

## ? Troubleshooting

If you have difficulty with your phone, please try the suggestions listed below. As a general rule, if a problem occurs, remove the batteries from all the handsets in your installation for about 1 minute, then disconnect and reconnect the power supply to the base and reinstall the handset batteries.

Problem	Cause	Solutions
No dialing tone when pressing <b>CALLS</b> key.	<ol style="list-style-type: none"> <li>The connection cord of the base station is not plugged in.</li> <li>The adapter cord is not plugged in correctly in the base station.</li> <li>The line is busy, as another handset is used.</li> <li>Wrong connection cord.</li> </ol>	<ol style="list-style-type: none"> <li>Check the connections. Unplug and plug back in the mains. Check that the telephone line cord has been plugged into the base station and the phone socket.</li> <li>Check the base station plug and the AC plug (remove and plug-in).</li> <li>Wait until the line is unoccupied.</li> <li>Use the original connection cord.</li> </ol>
"No Link to base" is displayed.	<ol style="list-style-type: none"> <li>Base station out of range.</li> <li>Base station is not connected to mains.</li> </ol>	<ol style="list-style-type: none"> <li>Reduce the range.</li> <li>Connect base station to mains.</li> </ol>
The call does not work.	Service not activated or wrong operator.	Check your Subscription with network.
No display.	Empty batteries.	Recharge batteries.

## Technical Details

Field Range	Up to 300 meters*
Indoor Range	Up to 50 meters*
Handset Battery Autonomy (average values)	18 hours talk time** 300 hours standby**
Number of Handsets	Up to 4
Electrical Connection/ Base Mains Adaptor/ Charger	Base main adaptor & Charger adaptor: Model No.: 1-CHUKA451-082 or AT-536B-060045B Input: 100-240 V/50-60 Hz/0.15 A Output: 6V DC/450 mA, 2.7W Only use the adaptors supplied with telephone. Single-phase AC, excluding IT install defined by the EN62368-1 standard. Caution: The network voltage is classified as hazard by the criteria of this standard.
Telephone Connection	Appliance designed for connection to a TNV3 class (telecommunications network voltage) analogue telephone line as defined by the EN62368-1 standard.
Batteries per handset	2pcs of AAA NiMH batteries - 2.4 V - 750mAh Only use the batteries supplied with the telephone. Use any other type of battery presents a risk of explosion. Used batteries must be disposed of in compliance with current environmental protection regulations.
Operating Temperature	From 5°C to 40°C

\* Values may vary according to environment.

\*\* Depending on initial battery charge.

**ATLINKS Europe**  
 28 Boulevard Belle Rive  
 92500 RUEIL-MALMAISON - France  
 RCS Nanterre 508 823 747

ATLINKS UK Ltd  
 3rd Floor, Waverley House  
 7-12 Noel Street, London, W1F 8GQ - UK  
 Company registration: 13809295

www.alcatel-home.com  
 Alcatel is a trademark of Nokia, used under license by ATLINKS.

F890 Voice UK  
 A/W no.: 10002668 Rev.4 (EN)  
 Made in PRC

# Alcatel

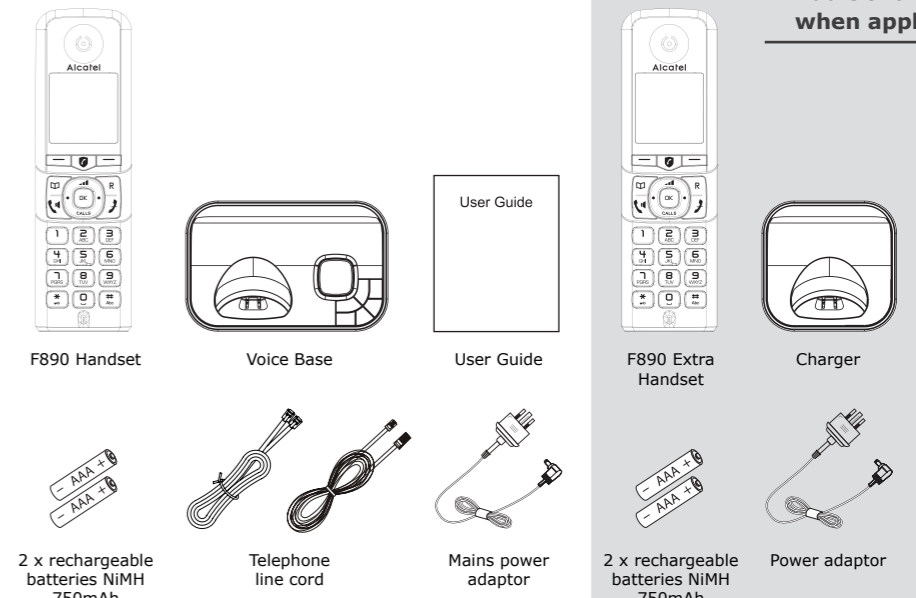
F890 VOICE/  
 F890 VOICE DUO/  
 F890 VOICE TRIO/  
 F890 VOICE QUAD

## User Guide

www.alcatel-home.com



## Box Content



### Additional items when applicable

## i General Information

### TROUBLESHOOTING

As a general rule, if a problem occurs, remove the batteries from all handsets for about 1 minute, then disconnect and reconnect the power supply to the base and reinstall the handset batteries. If you need more information or support please consult the support/Q&A section on our website: www.alcatel-home.com

### SAFETY

This telephone is not designed for Emergency calls when the main power fails. Do not use your telephone to notify a gas leak or other potential explosion hazard. Do not open your device or its power supply to avoid risk of electrical shock. Do not attempt to open the batteries, as they contain hazardous chemical substances. Your telephone must be located in a dry place away from hot, humid and direct sunlight condition. To avoid radio signal interference, place the phone at least 1 meter away from other electrical appliances or other phones.

### ENVIRONMENT

This symbol means that your inoperative electronic appliance must be collected separately and not mixed with the household waste. The European Union has implemented a specific collection and recycling system for which producers are responsible. **Help us protect the environment in which we live!**

### CONFORMITY

Hereby, ATLINKS EUROPE declares that the radio equipment type DECT is in compliance with Legislation: UK Radio Equipment Regulations (SI 2017/1206). The full text of the UKCA and EU declaration of conformity is available at the following internet address: www.alcatel-home.com



Average power per channel: 10mW  
 Maximum Output Power (NTP): 24dBm  
 Frequency Range: 1880-1900MHz

## Making and Receiving Calls

### Make and end a call

Press **[CALL]** either before or after enter a phone number.

Press **[END]** to end the call.

### Answer a call

Lift handset from base or charger (Call Settings).

If the phone is not on the charger cradle, lift handset and press **[CALL]** to answer a call.

For handsfree conversation, press another time **[CALL]**.

### Incoming speech volume

Press **[VOL+]** or **[CALLS]** to increase or decrease the volume of your caller's voice.

### Mute a call

Press **[MUTE]** (Right option) during a call.

### View or dial a number in Calls list (Redial & Incoming Calls) **[CALLS]**

Each phone stores the last 30 dialed numbers (up to 24 digits each) in the redial list and the last 50 incoming call numbers in incoming call list.

Press **[CALLS]** to open the calls list, press **[VOL+]** or **[CALLS]** to select an entry, press **[CALL]** to dial the number. Or press **[OPTIONS]** to select option.

## Phonebook

### Store entry in phonebook (up to 200)

In idle mode, press **[PHONEBOOK]** to open **Phonebook**.

Select **[OPTIONS]**. **Add contact** is highlighted, press **[SELECT]**.

Enter name of contact, then press **[CALLS]** to select **Home**, **Mobile** or **Work** and then enter the phone number.

### Save a Speed dial entry

In idle mode, press **[PHONEBOOK]** to open **Phonebook**. Press **[CALLS]** to select contact, **the contact** is highlighted, press **[OK]**.

Select **[OPTIONS]**, scroll down using the to highlight **Set speed dial** and press **[SELECT]**.

Scroll down to the speed dial location number you want to choose, press **[SAVE]**.

The display will show **Saved** as speed dial x (x being the Speed dial button).

### Call from the phonebook

Press **[PHONEBOOK]** to open **Phonebook**, then press **[VOL+]** or **[CALLS]** to select the desired entry.

Press **[CALL]** to dial out the desired entry number. If entry has more than one number saved, you will need to highlight the number you want by pressing **[VOL+]** or **[CALLS]** and then press **[CALL]** again.

### Save a contact as VIP

In idle mode, press **[PHONEBOOK]** to open **Phonebook**, press **[VOL+]** or **[CALLS]** to highlight the contact, then press **[OK]**.

Press **[OPTIONS]**, then press **[CALLS]** to choose **VIP status** press **[SELECT]**, press **[ON]** on the navigation key to select **On** or **Off**, then press **[SAVE]**.

### Dial a Speed dial entry

From the idle screen, press and hold the Speed dial key **[1]** to **[9]** that you want to dial.

## Handset Ringer Settings

Select **[MENU]**, press **[VOL+]** or **[CALLS]** to choose **Settings**.

Press **[SELECT]**, **Sounds** is highlighted.

Press **[SELECT]**, **Ringing** is highlighted, press **[SELECT]**.

Press **[ON]** on the navigation key to highlight the external melody you want, press **[CALLS]** to select the internal melody you want from the 10 ringtones.

Press **[CALLS]** again to select the volume level you want and press **[SAVE]** to save your choices.

## Answering Machine Setting

### Set Answer Delay

Press **[MENU]**, choose **Answer Phone / Select / [VOL+]** or **[CALLS]** choose **Settings / Select / choose Ring Delay / Select / [VOL+]** or **[CALLS]** to choose **Ans & Rec** or **Answer Only / Select?**, press **[ON]** on the navigation key to select **2-10 Ring**, press **[SAVE]**.

If you have subscribed to a voice mail service from your operator, make sure to set shorter delay on F890 Voice so that F890 Voice can answer and record the message.

### Set the answer mode

Press **[MENU]**, choose **Answer Phone / Select / [VOL+]** or **[CALLS]** choose **Answer Mode / Select / press [ON]** on the navigation key to select **Answer On/Off**. Press **[CALLS]** select **Answer Mode / press [ON]** on the navigation key to select **Ans & Rec** or **Answer Only**, press **[SAVE]**.

### Set the Out Going Message (OGM) voice language

Press **[MENU]**, choose **Answer Phone / Select / [VOL+]** or **[CALLS]** select **Dtam Language / Select / [VOL+]** or **[CALLS]** to select your preferred language, press **[OK]**.

### Record a personalised outgoing message

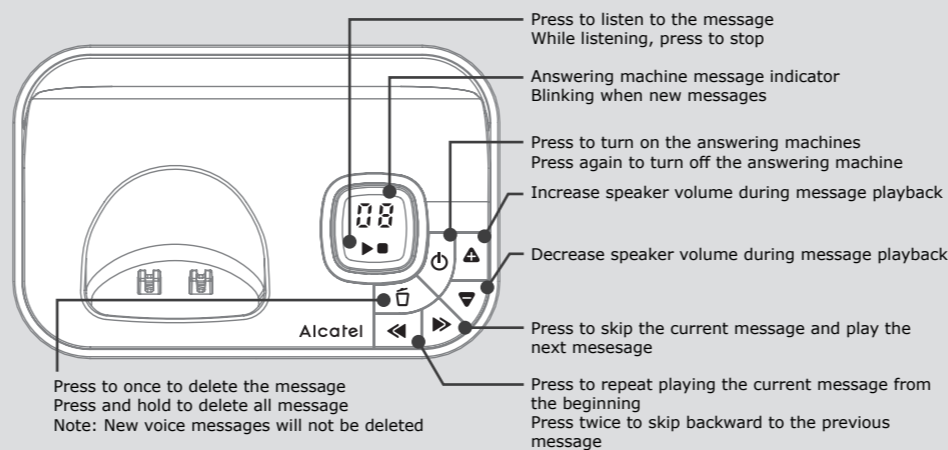
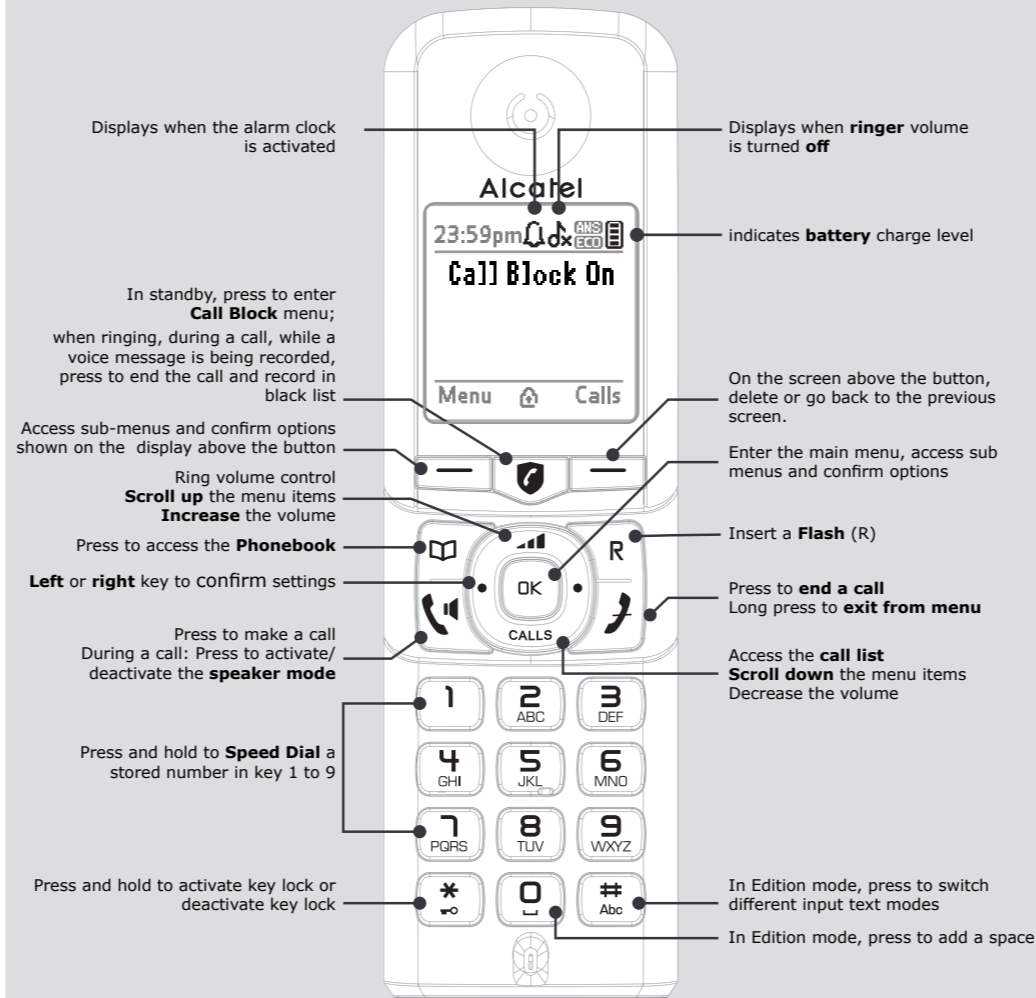
Press **[MENU]**, choose **Answer Phone / Select / [VOL+]** or **[CALLS]** select **Outgoing Msg / Select / [VOL+]** or **[CALLS]** choose **Ans & Rec** or **Answer Only / Select / choose Record Message / OK** to start recording / **[OK]** to end recording.

## Call Block

This telephone is built-in with Premium Call Block\*. This feature will help you avoid nuisance calls by only allowing some numbers to make your phone ring and avoid all automate calls. The default setting is OFF (please refer to the Call Block table description). You can change this setting from chapter 1 to 6.

\*This feature requires a subscription of Caller Line Identification service from your network service provider.

## Handset Display and Base description



### Follow below table to activate the desired mode

Call blocker status	Description
<b>ON</b>	<b>Premium call block</b> Authorized callers (phonebook and allowed list) call as usual and may leave a message on the answering machine if it is enabled. <b>Numbers in the black list are automatically rejected.</b> For the others, the phone plays a greeting message asking to enter a code to activate the ringer. Callers who don't get the code are rejected or authorised to leave a message (setting). Automated calls will be all directly rejected and blocked, as not able to enter a code. Anonymous, international or unknown numbers can also be set to always be blocked.
<b>CONTACTS OK</b>	Contacts saved in phonebook and allowed list call as usual and may leave a message on the answering machine if it is enabled. All others are automatically rejected. Anonymous, international or unknown numbers can be set to always be blocked.
<b>VIP OK</b>	Only Contacts saved as VIP and allowed list call as usual and may leave a message on the answering machine if it is enabled. All others are automatically rejected. Anonymous, international or unknown numbers can be set to always be blocked.
<b>NIGHT</b>	Same as VIP OK from 09:00 pm to 09:00 am. Out of this time frame the automatic Call block is OFF and calls can be blocked manually.
<b>OFF</b>	Automatic modes are disabled. <b>Manual Call block remains with its dedicated key.</b> Numbers can be rejected and added to Black List one by one during ringings, calls or TAM answers.

### 1. Enable ON: Premium Call Block

In idle mode, press **[CALLS]**, then choose **Call Blocker** and press **[SELECT]**, then choose **Status** and press **[SELECT]**, then choose **ON** and press **[SELECT]**.

After you enable this option, **Call Block On** will be displayed on the idle screen.

#### 1.1. Greeting message: Default/Personalize

Default greeting message recorded in your phone doesn't indicate the PIN access code to dial in order to bypass the call block and have the phone ring. If you prefer disclosing this code, you can record your own greeting message giving the PIN assess code.

##### 1.1.1. How to record your own greeting message

In idle mode, press **[CALLS]**, then choose **Call Blocker** and press **[SELECT]**, then choose **Greeting** and press **[SELECT]**, then choose **Record message** and press **[SELECT]**. Then follow the voice guide.

##### 1.1.2. Default access code

The default access PIN code is 00. You can change it as follows:

In idle mode, press **[CALLS]**, then choose **Call Blocker** and press **[SELECT]**, then choose **Change PIN** and press **[SELECT]**. Then follow the instructions on the screen.

#### 1.2. Set if you want those who are rejected to leave a message on your answering machine

In idle mode, press **[CALLS]**, then choose **Call Blocker** and press **[SELECT]**, then choose **Save Msg to DTAM** and press **[SELECT]**, then choose **On** and press **[Save]**.

**Note:** the answering machine must be turned On. Please refer to the Base description drawing.

#### 1.3. Add a Number to Allowed list

##### 1.3.1. In idle mode

Press **[CALLS]**, then choose **Allow List** and press **[SELECT]**, then choose **Add contact** and press **[SELECT]**, then enter the phone number and press **[Save]**.

##### 1.3.2. From Call list

In idle mode, press **[CALLS]**, then choose call list entry and press **[OPTIONS]**, then choose **Allow number** and press **[SELECT]**, confirm by pressing **[Yes]**.

#### 1.4. Add a Number to Phonebook

Please follow the instruction of Phonebook section to store an entry in the phonebook.

#### 1.5. Add a Number to Black list

##### 1.5.1. In idle mode

Press **[CALLS]**, then choose **Black List** and press **[SELECT]**, then choose **Add contact** and press **[SELECT]**, then enter the phone number and press **[Save]**.

##### 1.5.2. From Call list

In idle mode, press **[CALLS]**, then choose call list entry and press **[OPTIONS]**, then choose **Block number** and press **[SELECT]**, confirm by pressing **[Yes]**.

##### 1.5.3. When ringing

Numbers can be rejected one by one during ringing, on the call or when leaving a message by pressing **[CALLS]**, then press **[Yes]** to save the number to Black List.

##### 1.5.4. Delete a number from Black list

In idle mode, press **[CALLS]**, then choose **Black List** and press **[SELECT]**, then choose **Delete** and press **[SELECT]**, choose the number and press **[SELECT]**, confirm by pressing **[Yes]**.

#### 1.6. Add an Area code

In idle mode, press **[CALLS]**, then choose **Blk Area code** and press **[SELECT]**, then press **[Yes]** and enter the area number to be blocked and press **[Save]**.

### 2. Enable CONTACTS OK

In idle mode, press **[CALLS]**, then choose **Call Blocker** and press **[SELECT]**, then choose **Status** and press **[SELECT]**, then choose **Contacts OK** and press **[SELECT]**.

### 3. Enable VIP OK

In idle mode, press **[CALLS]**, then choose **Call Blocker** and press **[SELECT]**, then choose **Status** and press **[SELECT]**, then choose **VIP OK** and press **[SELECT]**.

### 4. Enable NIGHT

In idle mode, press **[CALLS]**, then choose **Call Blocker** and press **[SELECT]**, then choose **Status** and press **[SELECT]**, then choose **NIGHT** and press **[SELECT]**.

### 5. Enable OFF

In idle mode, press **[CALLS]**, then choose **Call Blocker** and press **[SELECT]**, then choose **Status** and press **[SELECT]**, then choose **OFF** and press **[SELECT]**.

### 6. Block anonymous/international/out of area whatever the Call Block status, except OFF

When this **Withheld** is set to **ON**, the phone will block all calls that have no Caller ID.

When this **International** is set to **ON**, the phone will block all the international calls.

When this **Out of Area** is set to **ON**, the phone will block all the Out of Area calls.

In idle mode, press **[CALLS]**, press **[CALLS]** to choose **Call type**, press **[SELECT]**.

Press **[ON]** on the navigation key to select **Withheld On/Off**, then press **[CALLS]**,

Press **[ON]** on the navigation key to select **International On/Off**, then press **[CALLS]**,

Press **[ON]** on the navigation key to select **Out Of Area On/Off**, then press **[Save]**.